



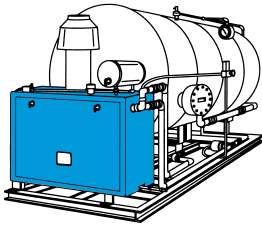
**WARRICK  
CONTROLS**

# RA-430 SERIES

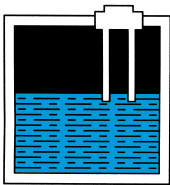
## REMOTE ALARM PANEL

### APPLICATIONS

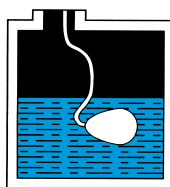
#### Critical Equipment



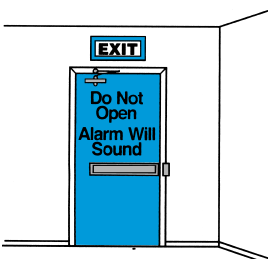
#### Liquid Level Alarms High/Low-Probes



#### Liquid Level Alarms High/Low-Float



#### Security Entry/Exit Way Monitoring



- A** Adjustable sound level from 77 to 97 dB via moveable horn shutter
- B** Red LED indicates current fault condition
- C** Green LED indicates panel has power
- D** Yellow LED indicates fault condition has occurred, even if fault has cleared itself
- E** Test button allows alarm activation and system testing
- F** Acknowledge button allows direct alarm silencing

The Warrick RA-430 alarm panel is the best solution for your remote alarm needs. Packaged in a secure NEMA 3R rated electrical enclosure, it is designed to interface with a variety of switching inputs for critical alerting situations ranging from equipment shutdown to breach of security.

The economical, solid state RA-430 alarm panel offers many features not commonly found in controls of this type:

- Interfaces with virtually any non-powered contact, including conductive probes, mercury tilt floats, and reed switch floats
- Adjustable sound level
- Caution light to warn when a fault condition has occurred and cleared itself
- Highly visible red, green and yellow LED indicators for fault and normal operating conditions
- Low-voltage sensing circuit for wiring ease
- Indoor or outdoor installation
- Low cost, long life
- High impact polycarbonate plastic housing
- Compact design, small footprint
- Easy-to-reach screw-in wiring terminals for easy installation and secure connections
- Options for either normally open or normally closed contacts

# RA-430 SERIES

## REMOTE ALARM PANEL

### SPECIFICATIONS

- **Supply Voltage:**  
120 VAC +10%,  
-15%, 4.8 VA  
maximum
- **Indicators:**  
Red, green and  
yellow solid state  
LEDs
- **Audible Alarm:**  
Field adjustable  
from 77-97 dB at 2 ft.
- **Enclosure:**  
NEMA 3R polycar-  
bonate (6 1/4"H x  
3 1/4"W x 3 1/2"D)
- **Sensor Voltage:**  
D.C. version,  
12 VDC;  
A.C. version,  
12 VAC
- **Terminals:**  
Size 6 pan head  
screws with  
captivated wire  
clamping plate
- **Temperature:**  
-22° to 150° F  
ambient
- **Sensitivity, A.C.  
Version:**  
0-26K ohm  
maximum specific  
resistance
- **Listing:**  
U.L. Listed,  
Industrial Control  
Equipment (508)
- **Conduit  
Connection:**  
3/4" NPT,  
PVC material

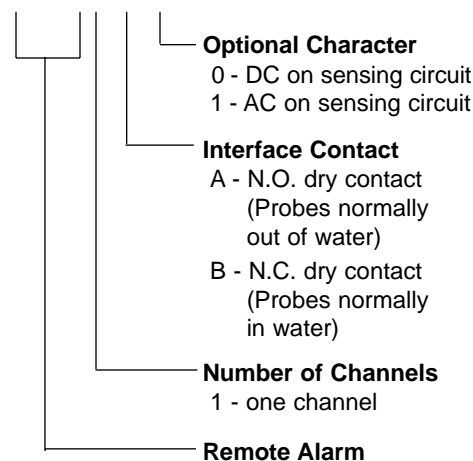
### Dry Contact Operation:

The green LED will light when power is applied to the unit. When the remote contact changes state (fault condition), the audible alarm will activate and the red and yellow LEDs will light. When the acknowledge pushbutton is pressed, the audible alarm will stop and the yellow LED will clear. The red LED will remain lit as long as the fault condition exists. When the fault condition is corrected, the red LED will clear.

When a fault condition occurs and corrects itself prior to depressing the acknowledge button, the audible alarm and red LED will automatically activate and clear, matching the fault condition. However, the yellow LED will remain lit to indicate that the fault condition had previously occurred. Pressing the acknowledge button will clear the yellow LED.

### Ordering Information:

RA 431 X X



#### Maximum Sensor Wire Run:

- A.C. Version:** 1000 feet based on 14 or 16 gauge MTW or THHN wire
- D.C. Version:** 5000 feet based on 14 or 16 gauge MTW or THHN wire

### Probe Operation:

For high liquid level alarms, Model RA-431A1 should be used. When power is applied to the unit, the green LED will light. A normal condition means the liquid level is below the probes. When liquid touches the probes, the audible alarm and red and yellow LEDs will activate. When the acknowledge button is pressed, the audible alarm and yellow LED will clear. The red LED will remain lit until the fault condition is cleared.

When a fault condition occurs and corrects itself prior to pushing the acknowledge button, the audible alarm and red LED will automatically activate and clear, matching the fault condition. However, the yellow LED will remain lit to indicate that the fault condition had previously occurred. Pressing the acknowledge button will clear the yellow LED.

For low liquid level alarms, Model RA-431B1 should be used. A normal condition means the liquid is covering the probes. Panel operation is the same as described for high level alarm.

*For more information about Warrick products, please contact us to request our full line Product Selection Guide.*

### Authorized Distributor:



**Caution:** Both the RA-430 and the remote switch must be located in a non-hazardous area. If the remote switch is located in a hazardous location, use a TA-730 Series or other appropriate panel. Contact Warrick Controls for further assistance.