



Optional Softcase

AEA's CellMate EX Analyzer is a graphical 600 - 999 MHz antenna analyzer that is primarily used to graph and examine antenna VSWR and Return Loss plots.

The CellMate EX includes Signal Generator and Relative Field Strength modes, multi-layer menus, auto-scaling, and auditory cues for extremely flexible operability. As a low priced, accurate, and graphical analyzer, the CellMate EX provides data plots in a fraction of the time and cost it takes to do it manually.

At twenty ounces, the CellMate EX Analyzer is light weight and easily hand held. With the Analyst Director Software to interface with your PC, you have endless curve storage and printout capability.

FEATURES

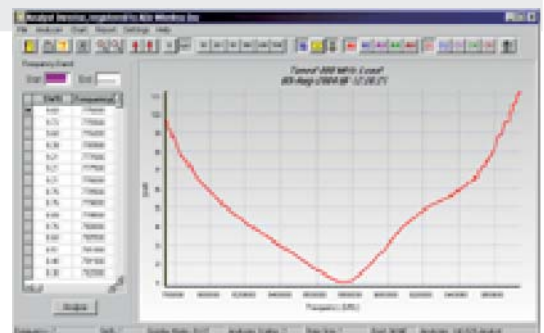
- Return Loss and VSWR modes
- Auto Scaling
- Auditory cues
- Signal generator mode
- Relative Field strength mode
- Self Test and calibration functions
- Battery Saver auto-off and auto-hold functions
- Non-volatile memory
- Storage for 15 plots
- Optional Windows™ Analyst Director Software
 - High resolution plot display on PC
 - Simultaneous multiple plot viewing in memory mode
 - Remote control capability
- EL Backlit SuperTwist display for better contrast and viewing angles
- Compatible with NiMH and NiCd batteries
- Battery Saver auto-off function

BENEFITS

- Simplicity of tuning and checking antennas
- Ability to archive and print plots for documentation
- Lightweight, portable, and battery power capability

SPECIFICATIONS

- Frequency range 600 - 999 MHz
- Tuning/Display resolution Increments of 10 KHz
- Display width 0 to 200 Mhz
- Impedance Range 50 Ohms
- Antenna connector Industry standard "N" connector
- Output power >+5 dBm@ 50 ohms
- Harmonic and spurious >40 dB below fundamental
- VSWR Plotting range 1:1 to 10:1
- Return Loss plotting range -1.7 to -30 dB
- Maximum reverse input +20 dBm
- Measurement speed Single frequency: Several sweeps per second
Normal sweep: < 2 seconds
Store 15 plots
- Nonvolatile memory 9600 BPS
- Serial interface speed 12-16 VDC @ 300 ma minimum or 8 AA's (Alkaline or NiMH)
- Power requirements 8.5" x 4.3" x 2.25"
- Size 20 oz.
- Weight



Optional Analyst Director Software